

SEND NEWSLETTER

ADVENT 2 EDITION

AS WE COME TO THE END OF THIS BUSY HALF TERM, I WOULD LIKE TO SAY HOW INCREDIBLY PROUD WE ARE OF OUR CHILDREN IN THE RUN UP TO CHRISTMAS. THEY HAVE TAKEN PART IN A WIDE RANGE OF FUN AND ENRICHING ACTIVITIES, INCLUDING TRIPS TO ST JOSEPH'S CHURCH, ABBEY PARK AND NEWARKE HOUSES, BLACK HISTORY MONTH AND CHILDREN IN NEED EVENTS, A CINEMA TRIP, DISCOS, DRONE FLYING EXPERIENCES, MENPHYS CAROL CONCERTS AND NATIVITIES, FOREST SCHOOL AND OUTDOOR LEARNING, AS WELL AS ALL OF OUR CHRISTMAS CELEBRATIONS.

THROUGHOUT THE TERM, THE CHILDREN HAVE BEHAVED BEAUTIFULLY, SHOWING KINDNESS, LOVE AND RESPECT, AND HAVE WORKED HARD IN EVERYTHING THEY DO. AS SENCO, I AM ALWAYS HERE TO SUPPORT YOU AND YOUR CHILD, SO PLEASE DO GET IN TOUCH IF YOU NEED ANY FURTHER SUPPORT AS WE MOVE INTO THE NEW YEAR.

THANK YOU FOR YOUR CONTINUED SUPPORT, AND I WISH YOU ALL A HAPPY AND PEACEFUL CHRISTMAS.

AS WE MOVE INTO THE NEW TERM, YOUR CHILD'S AUTUMN TERM POP WILL BE REVIEWED, AND A NEW POP WILL BE SHARED WITH YOU VIA ARBOR IN JANUARY. PLEASE KEEP AN EYE OUT FOR THIS, AS THE POP HIGHLIGHTS THE TARGETS YOUR CHILD WILL BE WORKING TOWARDS IN SCHOOL, ALONG WITH THE SUPPORT IN PLACE TO HELP THEM ACHIEVE THESE. WE VALUE YOUR PARTNERSHIP AND ENCOURAGE YOU TO LOOK THROUGH THE POP AND SHARE ANY THOUGHTS OR QUESTIONS YOU MAY HAVE.



FILM NEGATIVE



FILM NEGATIVE

FILM NEGATIVE

HELPFUL CONTACTS

LEICESTER DYSLEXIA ASSOCIATION
HELPLINE GENERAL ENQUIRIES
LEICESTERSHIRE - 07811 774306
WWW.LDADYSLEXIA.ORG.UK

NEURODIVERGENCE FOCUS

NEURODIVERGENT FOCUS OF THE MONTH: SUPPORTING CHILDREN WITH DYSLEXIA

NEURODIVERGENCE FOCUS OF THE MONTH: DYSLEXIA

DYSLEXIA IS A SPECIFIC LEARNING DIFFERENCE THAT PRIMARILY AFFECTS READING, SPELLING AND WRITING.

PUPILS WITH DYSLEXIA MAY FIND PHONOLOGICAL PROCESSING, WORKING MEMORY AND PROCESSING SPEED CHALLENGING, WHICH CAN IMPACT THEIR CONFIDENCE AND PROGRESS IN THE CLASSROOM. THESE DIFFICULTIES ARE NOT LINKED TO INTELLIGENCE, AND MANY PUPILS WITH DYSLEXIA HAVE STRENGTHS IN AREAS SUCH AS PROBLEM-SOLVING, CREATIVITY AND ORAL COMMUNICATION.

IN A PRIMARY SCHOOL SETTING, CONSISTENT AND INCLUSIVE SUPPORT CAN MAKE A SIGNIFICANT DIFFERENCE. HELPFUL STRATEGIES INCLUDE PROVIDING CLEAR, STRUCTURED PHONICS TEACHING, USING MULTI-SENSORY APPROACHES TO LEARNING (SUCH AS VISUAL, AUDITORY AND KINAESTHETIC ACTIVITIES), AND ALLOWING EXTRA TIME FOR READING AND WRITTEN TASKS.

REDUCING THE AMOUNT OF COPYING FROM THE BOARD, PROVIDING PRINTED RESOURCES, AND USING OVERLAYS OR DYSLEXIA-FRIENDLY FONTS CAN ALSO SUPPORT ACCESS TO LEARNING. POSITIVE ENCOURAGEMENT, OPPORTUNITIES TO DEMONSTRATE UNDERSTANDING VERBALLY, AND A FOCUS ON STRENGTHS HELP BUILD CONFIDENCE AND ENSURE PUPILS WITH DYSLEXIA FEEL SUPPORTED AND SUCCESSFUL.

DATES FOR THE DIARY

REMINDER FOR PARENTS APPLYING FOR SCHOOL ADMISSIONS EYFS 2
PARENTS HAVE UNTIL MIDNIGHT ON THURSDAY 15 JANUARY 2026 TO APPLY FOR THEIR FULL-TIME SCHOOL PLACE IN A RECEPTION CLASS FOR 2026/27.

MONDAY 5TH JANUARY 2026: EPIPHANY MASS

SUNDAY 11TH: YEAR 5 AND 6 LEAD MASS AT ST JOSEPHS 9AM

MONDAY 12TH JANUARY 2026: CELEBRATION OF THE WORD LED BY THE CHAPLAINCY TEAM
YEAR 6 TO ATTEND ST PAUL'S DRESS REHEARSAL PERFORMANCE OF SISTER ACT

YEAR 6 TO VISIT THE WARNING ZONE, LEICESTER
YEAR 5, MRS DARBY'S ASSEMBLY – YEAR 5 PARENTS INVITED

MONDAY 26TH JANUARY: ADORATION OF THE BLESSED SACRAMENT: ALL WELCOME TO ATTEND
2.30PM

FOR FURTHER DATES, PLEASE SEE MRS DEDMAN'S NEWSBITE

STUDENT SUCCESSSES

WELL DONE TO TEIRNAN WALER, WHO SMASHED BEING A NARRATOR IN OUR KS1 NATIVITY PRODUCTION!

SZAFINA, TEIRNAN, DION, ANAIS, MYLES AND OTHERS WERE AMAZING IN THE LATST INSTRUMENTAL MUSIC CONCERT.

LOLA, ISABELLA.W AND DION ATTENDED THE MEMPHYS CAROL CONCERT AND REPRESENT ST JOSEPH'S BEAUTIFULLY – AMAZING SINGING!

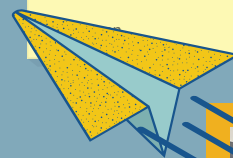
ISLA-ROSE TINSLEY AND ANAIS REED TOOK PART IN SEVERAL GIRLS FOOTBALL AMTCHES, THE LATEST RESULTS WERE DREW TWO AND WON ONE – AN AMAZING RESULT!

GIDEON HAS ALSO TAKEN PART IN OUR BOYS FOOTBALL TEAM, PUTTING ST JOSEPH'S IN A DECENT POSITION WITHIN THE DIVISION.

DYLAN, ISLA-ROSE T AND NICOLA HAVE SMASHED THEIR ROLES OF BEING DIGITAL LEADERS, HELPING RAISE THE PROFILE OF COMPUTING ACROSS THE SCHOOL.

NHS Healthy Start

A brilliant scheme aimed at families receiving certain benefits. It is a government-run scheme to support families in getting the best start in life. The scheme provides a pre-paid card to spend with local retailers to buy healthy food and milk. The card can also be used to get free vitamin supplements, including tablets for women and drops for children. Please visit the Healthy Start website to find out more: [Get help to buy food and milk \(Healthy Start\)](#)



FILM NEGATIVE

FILM NEGATIVE

FILM NEGATIVE