



15.12.22

Message from the Headteacher

Dear All,

I hope that you are all well and ready for a well-earned Christmas break. The children have all worked incredibly hard this term as have you their parent's and carers, ensuring that they are always prepared and ready to learn.

The Advent term is always extremely busy, with so many special events planned, it's hard to keep up! I know from the conversations I have had, with the children, that you have many activities planned for your time 'off' too!

I hope that the children have shared their learning with you, and you have had a chance to look at their learning on Twitter. I'd also like to take this opportunity to thank all who have been able to pop into school and share some of our experiences with us. Next year there will be more opportunities for you to share with us through class assemblies and performances, shared lunches and open mornings/afternoons and I look forward to seeing you at school.

I wish you all a very peaceful and relaxing time with family and friends and I look forward to sharing the children's memories when they return to school in January.

'God never gives someone a gift they are not capable of receiving. If He gives us the gift of Christmas, it is because we all have the ability to understand and receive it', Pope Francis.

Stay Safe,
Christmas Wishes

Mrs Dedman

EYFS NATIVITY



Last week Foundation Stage performed their Nativity 'The Star that couldn't Twinkle'. They were all super stars, What a performance and thank you all who shared this special moment with us.



Thank You Mr Challoner and Mrs Darby for the information you shared last night about the Year 4



Multiplication Check

[Multiplication tables check: information for parents \(text version\) - GOV.UK \(www.gov.uk\)](#)

Strep A and Scarlet Fever

In response to the increased incidence of Scarlet Fever, please view the links below for further guidance.

So far this season (from 12 September to 4 December) there have been 6,601 notifications of scarlet fever. This compares to a total of 2,538 at the same point in the year during the last comparably high season in 2017 to 2018.

[UKHSA update on scarlet fever and invasive group A strep - GOV.UK \(www.gov.uk\)](#)



[Strep A and scarlet fever – what are they and what are the symptoms? Information for parents, schools, colleges and early years providers - The Education Hub \(blog.gov.uk\)](#)

[Strep A - NHS \(www.nhs.uk\)](#)

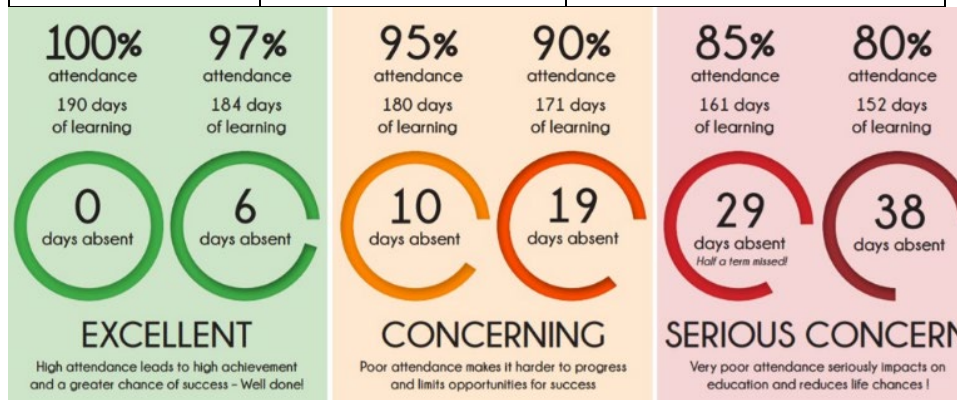
ATTENDANCE



ATTENDANCE MATTERS

every student, every day

Class	Teacher	Class Attendance so far this year (Class average to Date)
EYFS	NB	92.1%
Year 1	RA	92.4%
Year 2	TF	92.3%
Year 3	TC	93.3%
Year 4	PC	88.8%
Year 4/5	SD	93.6%
Year 5/6	SS	94.4%
Year 6	MM	94.6%



https://www.childrenscommissioner.gov.uk/wp-content/uploads/2022/12/aaa-guide-for-parents-on-school-attendance.pdf?utm_source=12%20December%202022%20C19&utm_medium=Daily%20Email%20C19&utm_campaign=DfE%20C19

Travelling Crib



On Friday last week the school received the travelling crib and spent the morning reflecting on the Nativity and the Journey made by all. The children then wrote Advent Prayers before the Crib continued its journey to St Pauls.



WELLINGTON STREET DODGERS

The newest/oldest band in Leicester playing songs all music lovers will know

Free Entry
Donations for
SANDS
Charity for
pregnancy and
baby loss

Live Music
FRIDAY 13 JANUARY 2023
FROM 7.30
THE DONKEY
203 WELFORD ROAD LEICESTER

Menphys Choir



Congratulations to all children who participated in the Menphys Choir. Thank You for a lovely evening, you represented our school well.

Christmas Dinner



Thank You Maxine and Amy for cooking an amazing Christmas Lunch

Christmas Parties



A Huge thank you to our fabulous Friends of St Josephs, for organising another successful Winter Disco with a very special visitor. Also Thankyou Rachel and Melissa for organising the Raffle with so many fantastic prizes.

Leicester
Safeguarding
Children Partnership Board

WORKING TOGETHER
TO KEEP CHILDREN SAFE



If you are concerned about the safety and welfare of a child in Leicester, please contact us by calling 0116 454 1004 (24-hour service) or the police on 0116 222 2222.
<https://www.leicester.gov.uk/health-and-social-care/support-for-children-and-young-people/children-s-social-care/child-protection/#:~:text=If%20you%20are%20concerned%20about,us%20from%20a%20free%20telephone.>

Wishing our pupils, school staff, central team, governors, Trust board and all their families a very Merry Christmas. ♥️ 🎄 ❄️ ❄️

Admissions Reminder: Closing Date for admissions September 2023, is 15th January 2023.

Dates for the Diary

Date	Event
04.01.23	Children Return to school
09.01.23	Epiphany Mass at School 2pm
11.01.23	Mrs Darby's Class Assembly 9am
13.01.22	School Pantomime - M and M productions